

RECOMMENDED PCB LAYOUT
GENERAL TOLERANCE ±0.05

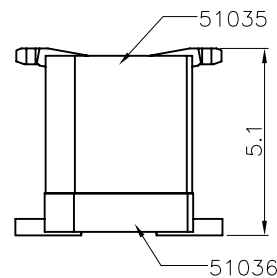
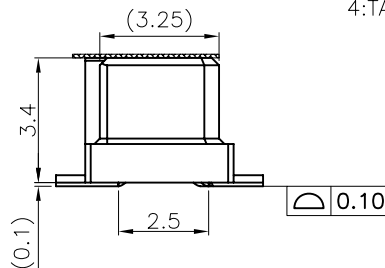
NOTES:

1. MATERIAL:
 - 1.1 HOUSING: THERMOPLASTIC, HIGH TEMP., UL94V-0;
 - 1.2 CONTACT: COPPER ALLOY
2. FINISH:
 - 2.1 CONTACT: 50u" MIN. NICKEL UNDER PLATING OVERALL
N:100~200u" MATTE TIN PLATING OVERALL
3. REFLOW SOLDER CAPABLE TO 260°C
PER ACES SPEC.
4. SPEC. PLS. REFER TO PS-51035-XXXX-XXX
5. PACKAGE PLS. REFER TO 51036-XXXCR-05-TRP
6. PART NUMBER

51036-XXX X X-XXX	XXX	HOUSING COLOR
	001	BLACK
	002	NATURAL

NO OF CKT — PLATING
N:100~200u" MATTE TIN PLATING OVERALL

PACKING
4:TAPE & REEL WITH MYLAR



MATING DRAWING

CKT	Dim A	Dim B	MYLAR SIZE
14	10.20	7.50	6.25

一般公差 TOLERANCES X ±0.5 XX ±0.15 X ±0.25 .XXX ±0.1 ANGLES ±2°		宏致電子股份有限公司 Aces Electronics Co.,Ltd.	
檢驗尺寸標示 SYMBOLS ⊕ ⊗ INDICATE CLASSIFICATION DIMENSION ⊕ MARK IS CRITICAL DIM. ⊗ MARK IS MAJOR DIM.	品名 (TITLE) 1.25mm BTB D/R RCPT SMT S/T TYPE	製圖 (DR) TANGENHUI 14'/04/29 審核 (CHKD) DAVID	圖號 (DWG NO.) 51036-XXXXX-XXX 核准 (APPD) SIMON
表面處理 (FINISH)	比例 (SCALE) 5:1	單位 (UNITS) mm	張數 (SHEET) 1 OF 1 圖號 (DWG NO.) 圖號 (DWG NO.) 圖號 (DWG NO.)